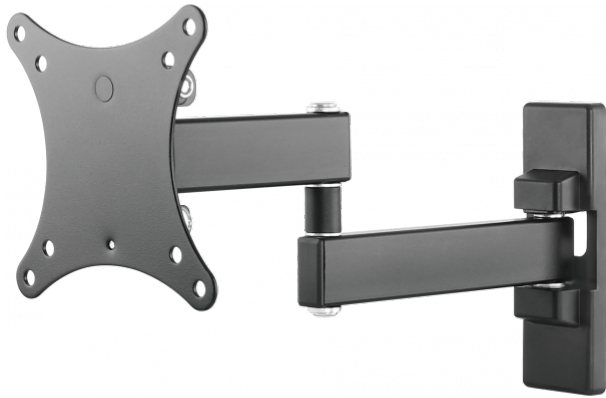


Double-articulated wall mount for Monitors from 13" to 27"

Post-Installation levelling

Reach 44-282 mm (1.7-11.1")

Thumbscrews for fixing display



Vision's **Vision Flat-Panel Mount - Wall Arm** range is tough and flexible. The VFM-WA1X1B is a value wall arm that fits most computer monitors. It has 100 x 100 mm mounting holes.

Up to 27"

Most displays from 13-27" fit this mount. If a larger monitor has the correct mounting points and weighs less than the SWL this mount can support it safely.

Thumbscrews

Vision considers every little detail to make installation faster. Two sizes of thumbscrews are included to fix the mount to the monitor.

Fast Installation

The mounting plate fixes to the back of the display, then just drop the display into place on the wall arm and lock in place with a single nut.

Rotation

Didn't fix the wall plate perfectly plumb? No problem! 6° of rotation allow you to get the display level easily once the display is in place.

SWL 15 kg

This mount has a "safe working load" of 15 kg (33.1 lb). It is made of steel to make it robust.

Tilt and Swivel

-3-10° tilt and 90° swivel. Use this mount to fix a display in a corner up high in a waiting room, or fix displays around an office.

Powder-Coated

Robust powder-coating makes this product more scratch resistant than the competition.

VESA

The VESA standard is based on how far apart the mounting holes are on the back of your flat-panel. Holes 100 x 100 mm apart are known as VESA100 and will suit this mount. This product also fits displays with the smaller VESA75 size.

SPECIFICATIONS

PRODUCT DIMENSIONS

see image

PACKAGED DIMENSIONS

191 x 182 x 46 mm / 7.5" x 7.2" x 1.8" (length x width x height)

PRODUCT WEIGHT

0.8 kg / 1.7 lbs

PACKAGED WEIGHT

0.9 kg / 2.0 lbs

SAFE WORKING LOAD

15 kg (33.1 lbs)

CONSTRUCTION MATERIAL

Wall plate: 2.5 mm cold-roll steel Display plate: 2.0 mm cold-roll steel

COLOUR

Plastic-Coated Black

VESA SIZES

100 x 100 mm 75 x 75 mm

ACCESSORIES INCLUDED

4 x M4 14 mm screw 4 x M5 14 mm screw

WARRANTY

Lifetime return-to-base

COMPLIANCES

RoHS, REACH

