

LPR Module

Licence Plate Recognition

Luxriot high-precision licence plate recognition software for detecting, registering and analysing vehicle licence plates.

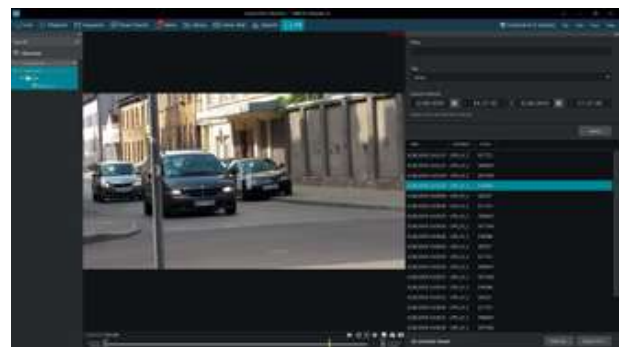
It offers a very high level of reading reliability, an intuitive installation process and great usability.

Luxriot Licence Plate Recognition Software is designed to work with a Luxriot Evo server. The software is ideally suited for vehicle access and traffic control, as well as for law-enforcement applications. We offer multiple customisation possibilities for specific licence plates and different types of vehicles (trains, cargo containers, etc.).

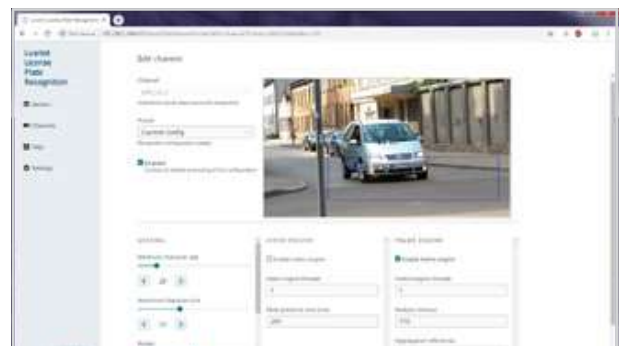
Additional features include an algorithm adaptive to lighting conditions, camera position and recognition area adjustment to optimise system load, as well as supporting local and remote lists of "allowed" and "restricted" numbers.

KEY BENEFITS

- Powerful recognition engine with very low error rate
- A wide selection of supported IP and analogue cameras
- Intuitive user interface for easy setup, monitoring and data retrieval
- Simultaneous processing of multiple video streams



The Monitor application has an LPR tab to observe and review LPR video and generated events.



Configuring the video stream for LPR is an intuitive and effortless procedure.