

# Milesight Network Cameras Accessories

Neat & Integrated Design, Easy & Robust Installation  
Facilitate your network video installation in different environments

## A01 Pole Mount

Weight: 720g  
Dimension: 170\*51.5\*152.6mm  
Installation Environment: For strapping cameras on poles between 102-127mm(4.1-5 inches) in diameter  
Applicable Model:  
Mini Bullet, Motorized Mini Bullet, Vandal-proof Mini Bullet  
Vandal-proof Motorized Mini Bullet, A41, A62, A63, A71, A72



## A02 Internal Corner Bracket

Weight: 540g  
Dimension: 170\*23.2\*205.3mm  
Installation Environment: For mounting cameras on an internal corner  
Applicable Model:  
Mini Bullet, Motorized Mini Bullet,  
Vandal-proof Motorized Mini Bullet, A71, A72



## A03 External Corner Bracket

Weight: 900g  
Dimension: 170\*152.6\*76.3mm  
Installation Environment: For mounting cameras on an external corner  
Applicable Model:  
Mini Bullet, Motorized Mini Bullet,  
Vandal-proof Motorized Mini Bullet, A71, A72



## A41 Wall Mount

Weight: 400g  
Dimension: 200\*129\*100mm  
Installation Environment: For wall or parapet installations  
Applicable Model:  
Speed Dome



## A42 Pendant Mount

Weight: 650g  
Dimension: 116.5\*225mm  
Installation Environment: Used to install cameras on an ceiling or vertical structure  
Applicable Model:  
Speed Dome



## A43 Junction Box

Weight: 1000g  
Dimension: 195\*164\*80mm  
Installation Environment: For the containing of electrical connections which need to be concealed from sight and deter tampering  
Applicable Model:  
A41, A42



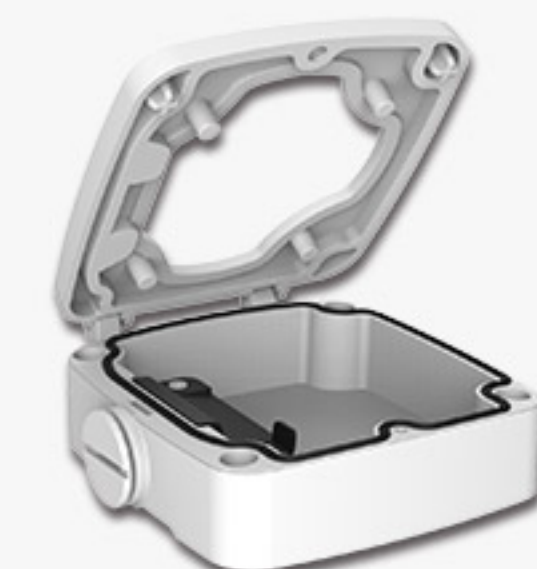
## A51 Protective Housing

Weight: 1988g  
Dimension: 380\*150\*H mm(H is adjustable)  
Installation Environment: Robust housing to defend cameras from being damaged in all challenging environments  
Applicable Model:  
Pro Box



## A62 Junction Box

Weight: 510g  
Dimension: 134\*127\*40mm  
Installation Environment: For the containing of electrical connections which need to be concealed from sight and preventing from being tampered.  
Applicable Model:  
Pro Bullet, Mini PTZ Bullet



## A63 Junction Box

Weight: 620g  
Dimension: 134\*127\*40mm  
Installation Environment: For the containing of electrical connections which need to be concealed from sight and deter tampering  
Applicable Model:  
Mini Bullet, Motorized Mini Bullet,  
Vandal-proof Motorized Mini Bullet



## A71 Wall Mount

Weight: 530g  
Dimension: 162\*124\*78mm  
Installation Environment: Used to install cameras on an wall or vertical structure  
Applicable Model:  
Mini Dome, IR Mini Dome, Vandal-proof Mini Dome,  
Weather-proof Mini Dome, AF Motorized Mini Dome



## A72 Wall Mount

Weight: 560g  
Dimension: 240\*160\*136mm  
Installation Environment: For wall or parapet installations  
Applicable Model:  
Pro Dome, Fisheye Camera



## A73 Adapter Plate

Weight: 28g  
Dimension: 115\*122.5\*10mm  
Installation Environment: For the installation that cable need to be routed through the side outlet  
Applicable Model:  
Vandal-proof Mini Dome



## A74 Junction Box

Weight: 60g  
Dimension: 121.5\*116.5\*37.2mm  
Installation Environment: For the containing of electrical connections which need to be concealed from sight and deter tampering  
Applicable Model:  
Vandal-proof Mini Dome



## AC-72 Smoked Dome Cover

Installation Environment:  
For concealing where a camera is pointed  
Applicable Model:  
Pro Dome



## A75 Junction Box

Weight: 200g  
Dimension: 155.5\*167\*33.5mm  
Installation Environment: For the containing of electrical connections which need to be concealed from sight and deter tampering  
Applicable Model:  
Pro Dome, Fisheye Camera



## A76 Pendant Mount

Weight: 620g  
Dimension: 136\*L (L is default as 300mm, also can be extended with A76-L)  
Installation Environment: Used to install cameras on an ceiling or vertical structure  
Applicable Model:  
Fisheye Camera, Pro Dome



## A76-L Extension Lever

Weight: 315g  
Dimension: 34\*300mm  
Installation Environment: Used as extensions for pendant mount  
Applicable Model:  
A76

